

ASSEMBLY INSTRUCTIONS

A-4 PCS



(M6*14mm)

M-4 PCS



(ϕ 8*40mm)

B-2 PCS



N-4PCS



Screw covers

C-4 PCS



(M3.5*14mm)

D-2 PCS



E-2 PCS



F-8 PCS

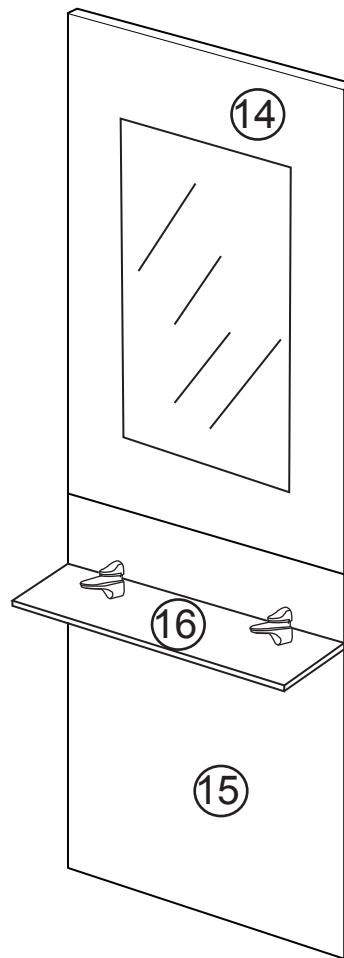


(M5*60mm)

G-8 PCS

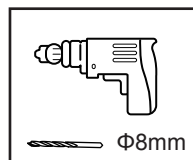


(ϕ 8*50mm)



6154-3016

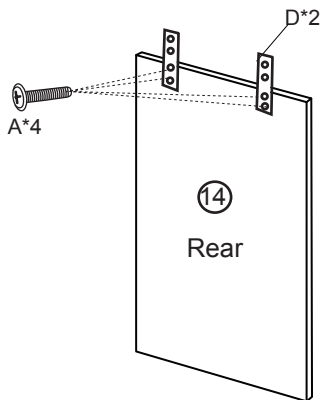
Additional tools required:
1 x Philips cross-head screwdriver.



1x Drill & 1x 8mm wood drill bit.

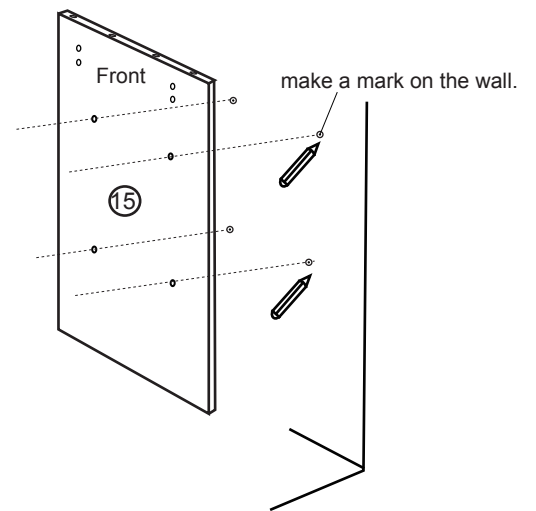
**DO NOT USE A POWER DRILL TO TIGHTEN THE SCREWS
-TIGHTEN BY HAND WITH THE ALLEN KEY PROVIDED.
Before use please check all fixings are tightened fully.**

1



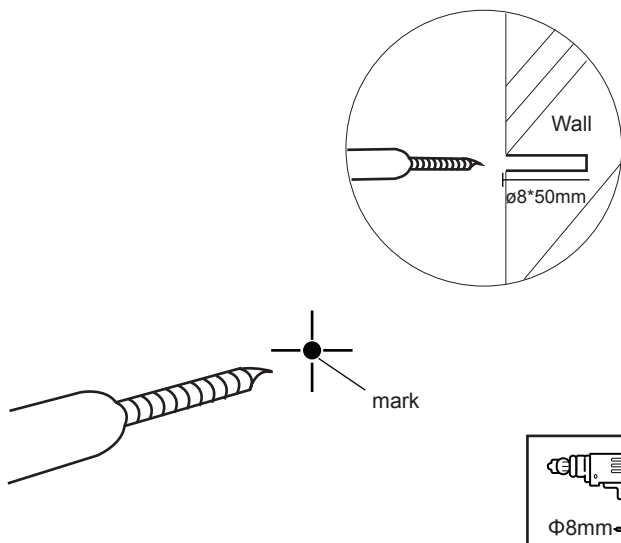
2

Lean the board "15" against the wall, and mark the wall.

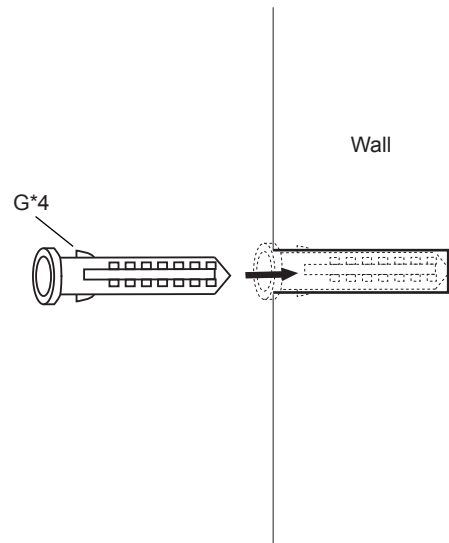


3

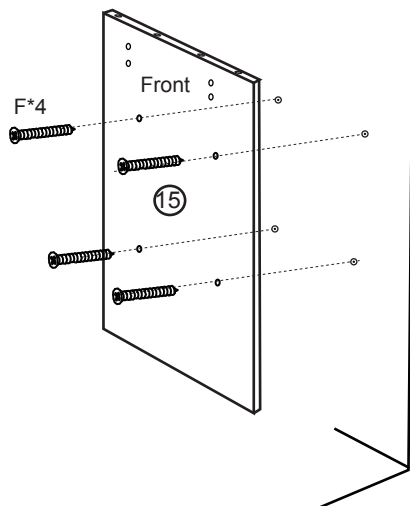
Drill into the wall.



4

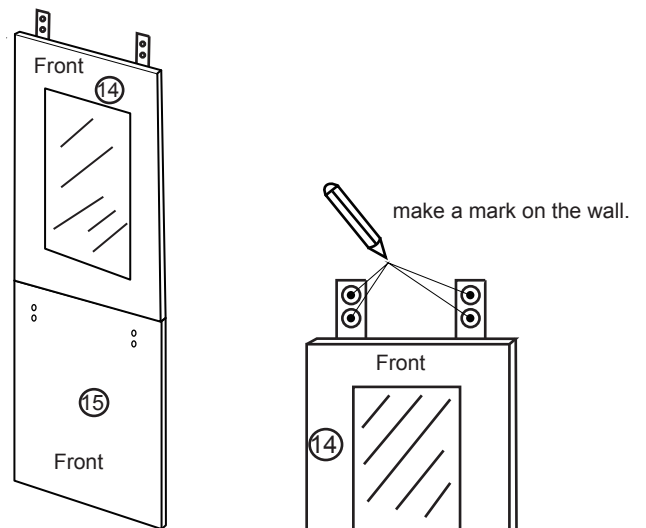


5



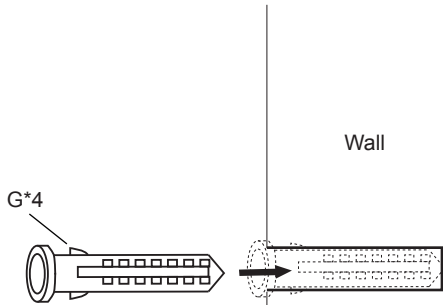
6

Put board "14" onto board "15". Then lean the board "14" against the wall, and mark the wall as step 2.

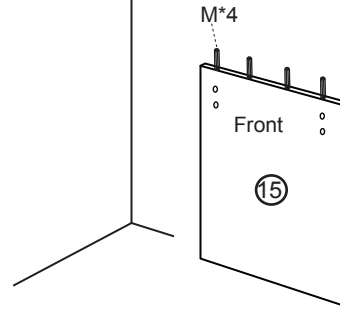


**DO NOT USE A POWER DRILL TO TIGHTEN THE SCREWS
-TIGHTEN BY HAND WITH THE ALLEN KEY PROVIDED.
Before use please check all fixings are tightened fully.**

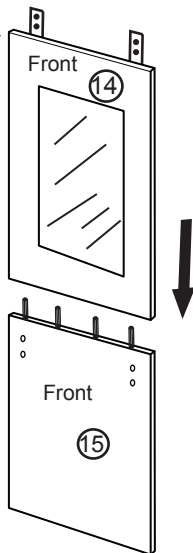
- 7** Take the board "15" off from board "14" and install part "G" into the wall as step 3&4.



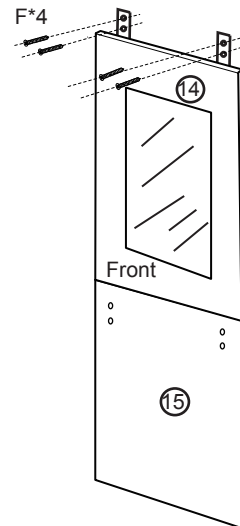
- 8**



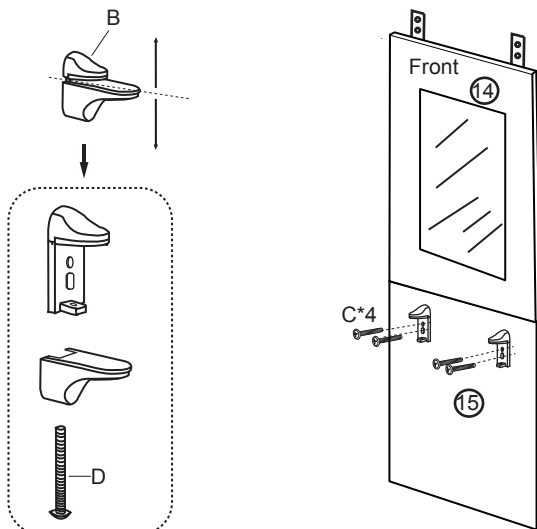
- 9**



- 10**



- 11** Separate the part "B" as below.



- 12**

